

FUJI BBF Filter System

NEW



For liquid treatment, in many cases automatic backwash filters are designed with brushing equipment or high-pressure jet cleaning nozzles. However, these kind of filters are effective up to 20micron – 100micron filtration range.

Generally, brush-cleaning does not work well against sticky/gummy dirt. Therefore, regular open-maintenance is required, which means stopping the operation.

As a solution, FUJI FILTER offers jet bubble backwashing system called “BBF system” by using sintered metal filter element which can be durable against high pressure.

Features

- Removal of adhesive material
- Fine filtration (up to $2\mu\text{m}$).
- No filter aid required.

Application

• Papermaking white water • Cooling Water • River Water • Processes where filtration aids are not available • Cellulose nanofiber • Final Filtration for Final Products • Filtration of adhesive material • Water treatment • Industrial water • Processes requiring automatic backwashing

※As it is newly developed products, there are many uncertain applications.

We will propose and judge if you provide the liquid feature and solid captured.

Specification

Design Pressure : 1MPaG ※High pressure design is available.

Design Temperature : 300°C ※High-temperature design is available.

Filter Element Type : Special sintered mesh (Developed and Manufactured by FUJI FILTER)

Shell Material : SUS304 ※Other special Material can be available.

Filtration rate : $2\sim 100\mu\text{m}$

Unit Code	流量 m3/hr	Housing-F. Area m ²	L	W	H	In/Out	Gas消費量 N-M3
BBF-18401	18 ~ 75	1- 3.68	1000	2500	3400	4" - JIS10K	0.16
BBF-18402	37 ~ 150	2- 7.35	1900	2500	3400	6" - JIS10K	0.32
BBF-18403	55 ~ 225	3- 11.03	2800	2500	3400	8" - JIS10K	0.48
BBF-18404	74 ~ 300	4- 14.70	3700	2500	3400	8" - JIS10K	0.64
BBF-18404	74 ~ 300	4- 14.70	3700	2500	3400	8" - JIS10K	0.64

For other inlet/outlet diameters, please contact us.

Test Equipment

Both bring-in and in-house testing are available.

We have glass housing type for seeing the condition of the elements and stainless housing for simulating actual operation. The below photo(photo on the left) is operating with clay minerals. The below photo(in the middle) is after bubble backwashing. Adhesive material can be removed by BBF.



Before

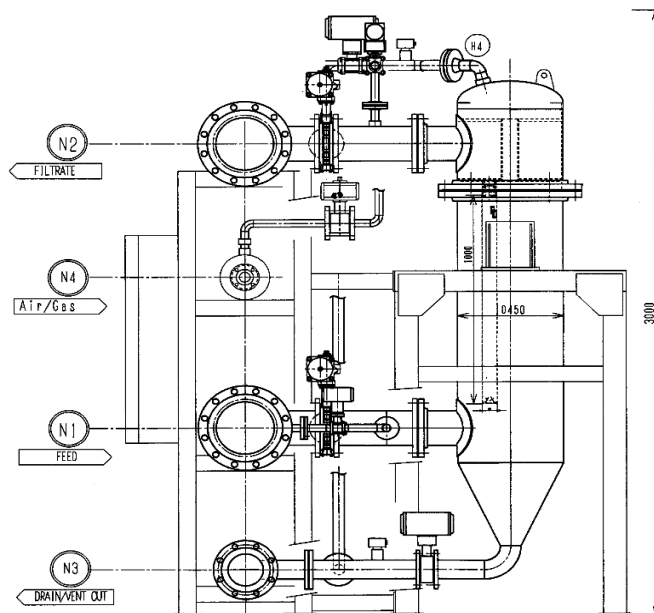
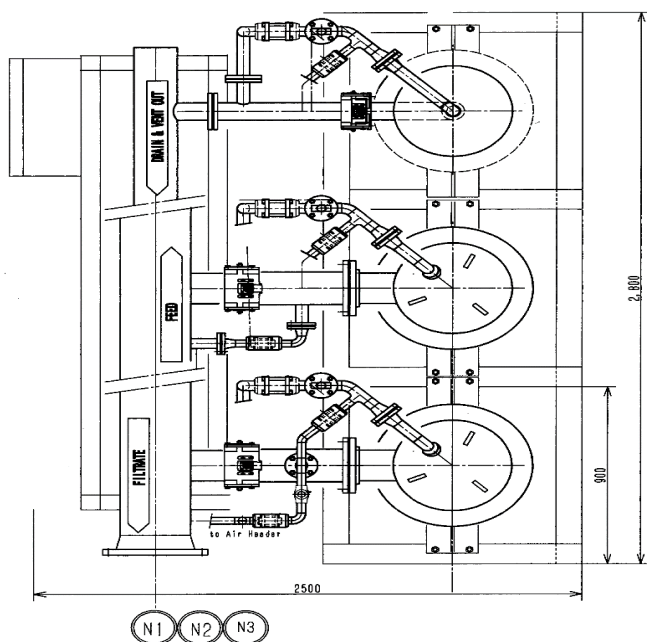


After



Glass housing

Drawing



1. Above drawing shows 3 vessel's operation.
2. The number of vessels can be accommodated up to 4 vessel's operation.

Contact :
Fuji Filter Manufacturing Co., Ltd.
ip-contact@fujifilter.co.jp